

FliteLine™ Advanced Avionics

COBHAM

Lightweight, compact navigation & communication

Brochure

The most important thing we build is trust



**GLOBAL FUNCTIONALITY
ON A WIDE RANGE
OF AIRFRAMES**



- Remote-mount, stackable transceivers
- Palm-size, color displays
- Combined NAV/COM display
- Mil-grade performance without mil-cost
- Interfaces with glass displays



FliteLine™ Advanced Avionics

A complete suite of next generation navigation and communication equipment from Cobham Aerospace Communications

FAA- and EASA-certified, ready to install in fixed- or rotary-wing aircraft

Compact, Lightweight Robust Displays

FliteLine panel-mount controls install quickly and easily, with minimal wiring changes when replacing many older radio controllers. Featuring LCD displays, they're NVG-compatible.

- CCN-955 COM/NAV Display combines Com & Nav tuning in a single display for a 50% space reduction. It supports 2 x 5 tuning and ARINC 429 interface
- CVC-152 VHF COM Display features 8.33 – 25 kHz selectable tuning, and covers the 118.000-136.975 standard and 118.000- 151.975 extended frequency ranges.
- CVN-252 VHF NAV Display shows active and standby frequencies, along with radial and bearing information. It supports 2 x 5 tuning and ARINC 429 interface.
- CTR-352 ATC Transponder Display controls dual, remote transponders. Both controller and flight segment identifiers are indexed via display.
- ADF Control Display controls dual remote ADF receivers. The display menu includes ADF station, antenna, bearing, and BFO information.



Technical Specifications

Width:	2.50 in. (63.5 mm)
Height:	3.15 in. (80.01 mm)
Length:	4.29 in. (108.97 mm) including connector
Weight:	0.77 lbs. (0.35 kg)
Altitude:	55,000 feet (16,764 m)
Temperature:	-4°F to +158°F (-20°C to +55°C)
Power Consumption:	280 mA max.
Power Requirements:	(lighting) 5.0 Vac, 5.0 Vdc & 28 Vdc

Remote-mount, Stackable Transceivers

FliteLine's unique Digital Signal Processing (DSP) design has resulted in a system with reduced weight and volume, plus enhanced performance and reliability. FliteLine digital (ARINC 429) and analog interfaces maximize installation flexibility, providing the ideal communication solution for helicopters, business and regional jets, transport aircraft, and military trainers.



- CVC-151 Com is an all-digital DSP VHF transceiver which can be configured with 8.33 or 25 kHz channeling and 118-137 MHz (118-152 MHz available as an option). This open ARINC 429 architecture supports FMS and RMS-555 radio management system interfaces. The CVC-152 control display completes the Com system.
- CVN-251 VHF NAV receiver combines VOR, ILS, localizer, glideslope and marker beacon in one, line-replaceable unit. The CVN-251 supports the total navigation requirements for MFD moving map displays and retains analog interface support for HSI's, CDI's, and RMI's. To complete the Nav system, include the CVN-252 control display.
- CDM-451 DME simultaneously scans three ground stations, has a 32-watt transmitter, and provides independent DME outputs for dual EHSI/EHADI displays with another for the FMS system.
- DFS-43A Automatic Direction Finder is an all-digital system designed to provide ADF navigation reception from non-directional beacons (NDB), locator outer markers (LOM), and commercial AM broadcast stations.

Technical Specifications

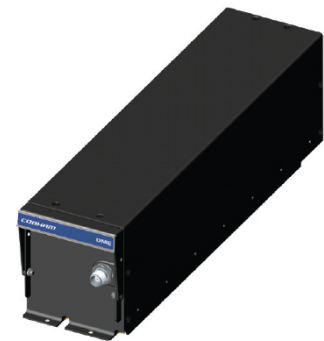
	CVC-151	CVN-251	CDM-451	DFS-43A
Width	2.4 in. 60.96 mm	2.4 in. 60.96 mm	2.4 in. 60.96 mm	4.1 in. 104.14 mm
Height	4.0 in. 101.6 mm	4.0 in. 101.6 mm	4.0 in. 101.6 mm	4.0 in. 101.6 mm
Length	12.95 in. 328.93 mm	12.95 in. 328.93 mm	12.95 in. 328.93 mm	13.33 in. 338.58 mm
Weight	3.75 lbs. 1.7 kg	3.75 lbs. 1.7 kg	3.6 lbs. 1.63 kg	5.64 lbs. 2.56 kg
Altitude	55,000 feet 16,764 m	55,000 feet 16,764 m	55,000 feet 16,764 m	55,000 feet 16,764 m
Temp.	-67° to +185°F -55° to +70°C	-67° to +185°F -55° to +70°C	-67° to +185°F -55° to +70°C	-67° to +185°F -55° to +70°C
Power Req.	28 Vdc	28 Vdc	27.5 Vdc (+/-20%)	27.5 Vdc (+/-20%)
Current Req.	Rx 0.5 A Tx 4.5 A	0.8 A	1.2 A max	0.6 A
Frequency Range	118.00-136.975 MHz or 118.000-151.975 MHz			190.0-1860 kHz and 2181-2183 kHz (.5 spacing)



FliteLine™ Avionics

Superior performance, global applicability

Feature	Rockwell Collins Pro Line	FliteLine™ CDM-451
Time-to-Station	Up to 120 minutes	Up to 8 hours 31 minutes (up to 511 minutes)
Environmental Qualification	DO-160D	DO-160E
Input Power	28 Volts DC	18 to 33 Volts DC
Audio Output	50 mW	Variable depending on configuration
Distance (Range & Accuracy)	300 nmi +/- 0.17nmi	300 nmi +/- 0.1 nmi
Receiver Sensitivity	-85 dBm	-92 dBm



Cobham FliteLine™ CDM-451
Distance Measuring System

Feature	Rockwell Collins Pro Line	FliteLine™ DFS 43A
Operating Temperature	-50 to +70 degrees C	-55 to +70 degrees C
Input Power	28 Volts DC	18 to 33 Volts DC including antenna
Audio Output	50 mW	10 mW or 40 mW depending on configuration



Cobham FliteLine™ DFS-43A
Direction Finding System

For further information please contact:

Cobham Aerospace Communications - USA

6400 Wilkinson Drive
Prescott, AZ 86301 USA
T: +1 928-708-1550
F: +1 928-541-7627
E: sales.prescott@cobham.com

Cobham Aerospace Communications - France

35 rue de Montlhéry
Silic-BP 20191
94563 Rungis Cedex France
T: + 33 1 49 78 66 00
F: + 33 1 49 78 66 99
E: sales.rungis@cobham.com